

Quick Start Guide, Rel. 4.0

IMPORTANT: When you first open your MusicPad Pro™ Plus, leave the power off, plug in the AC adapter, and charge the batteries at least 2 hours prior to use. Undercharging the batteries can result in permanent damage. Also, there is a slight drain on the batteries, even when your MusicPad Pro is not in use. Be sure to plug it in at least every two months to avoid permanent damage to the batteries.

1 Install and Open the Software

What Do I Need (Minimum requirements)?

- Computer and Operating System (OS)
 - IBM-compatible system with Pentium II or higher processor running Windows 2000, Windows XP (includes SP2), or Windows Vista
 - Macintosh running MacOS X v10.3.9 (or later) or MacOS X v10.4.10 (or later)
- 64 MB RAM (minimum)
- 50 MB available hard disk space
- XGA display with settings at 1024x768 pixels, 16-bit color
- CD-ROM drive

How Do I Install the MusicPad Manager Software?

- If you are using a Windows OS:
 1. Insert the MusicPad CD-ROM into your CD-ROM drive. If the MusicPad Pro software installation begins within 30 seconds, go to Step 2. If the MusicPad Pro software installation does not begin:
 - Click **Start** from the computer taskbar, then choose **Run**.
 - In the **Run** dialog box, type `D:\autorun.exe` (where D is the drive letter of your CD-ROM drive). Click **OK**.
 2. Click the **Install MusicPad Pro Software** button.
- If the MusicPad Pro software installation does not begin in 30 seconds:
 1. Click **Start** from the computer taskbar, then choose **Run**.
 2. Click **OK**, then click on the **Install MusicPad Pro Software** button. Follow the on-screen instructions.

- If you are using a Macintosh OS:
 1. Insert the MusicPad CD-ROM into your CD-ROM drive.
 2. Select the CD-ROM drive and double-click on the **Install** icon.
 3. Click the **Install MusicPad Pro Software** button.

How Do I Launch MusicPad Manager?

- If you are using Windows OS, double click the MusicPad Manager desktop icon. Go to the next section **Start Your MusicPad Pro**.
- If you are using a Macintosh OS, open the application folder and double-click on the MusicPad Manager icon. Go to the next section **Start Your MusicPad Pro**.

2 Start Your MusicPad Pro

How Do I Start My MusicPad Pro Plus?

1. Attach the power cord *or* charge the MusicPad Pro Plus with the supplied battery charging unit for 2 hours. Once charged, the MusicPad Pro Plus operates for 2 to 3+ hours on a fully charged battery. See **Tips and Common Questions** for information about extending your battery charge.
2. Press and release the white button on the bottom-right side of the MusicPad Pro. The MusicPad Pro starts up in 2-5 seconds.
3. Go to **Network Your MusicPad Pro**.

NOTE: Placing your MusicPad Pro in sleep mode extends the operating time approximately 8 hours. To place your MusicPad Pro in sleep mode, press and release the grey power button. The **Power Down** bar is displayed. Select **Sleep**. To toggle out of sleep mode, press and release the white power button again.

3

Network MusicPad Pro: USB

How Do I Connect the MusicPad Pro to My Computer Using USB So I Can Transfer Files?

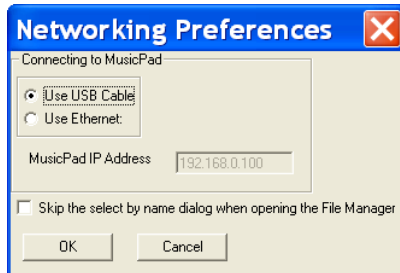
1. If your MusicPad Pro isn't already on, turn it on now.
2. Connect a USB cable to the USB2 port on the MusicPad, then connect it to the USB port on your computer. Be sure to follow



Connect USB cable to USB2 port

any instructions that appear on the screen of your PC or Macintosh.

3. Open the MusicPad Manager software. Select **Tools**→**MusicPad Manager Options**. Click **Networking**. The Advanced Preferences window is displayed.
4. Select **USB Cable** and click **OK**. The Options Dialog box is displayed. Click **OK**.



5. If you are a Windows user, go to **Are MusicPad Manager and MusicPad Pro Communicating?**. If you are a Macintosh user, go to number 6.

6. Macintosh users must change system preferences:
 - Click on the **Apple** and select **System Preferences**.
 - Click on the **Network** icon. The Network window is displayed.
 - Double click on the Ethernet Adapter (en1) entry. (On Leopard [10.5] you may have to add this manually by clicking on the '+', selecting the name Ethernet Adapter (en1), typing in a name, and clicking the 'Complete' button to create this entry.)
 - From the TCP/IP tab, be sure **Using DHCP** is specified in the Configure ipv4 drop-down menu. (On Leopard [10.5] this is just on the right hand side of the screen.)
 - Go to **Are MusicPad Manager and MusicPad Pro Communicating**.

Are MusicPad Manager and MusicPad Pro Communicating?

1. Open MusicPad Manager.
2. Go to the **Tools** (wrench) icon, then select **File Manager**.
 - If MusicPad Manager and MusicPad Pro are communicating, the File Manager window displays files in the upper and lower file panes. The upper file pane displays files located in MusicPad Manager. The lower file pane displays files located on MusicPad Pro.
3. You are connected! See **5: Tips and Common Questions** for more information about MusicPad Pro.

4

Tips and Common Questions

Q. How do I access the *User's Guide*?

A. If you are using Windows, select **Start**→**Programs**→**FreeHand Systems**→**MusicPad Pro**→**User's Guide**. If you are using a Macintosh, open the **User's Guide** from the same folder you open MusicPad Manager. You need Adobe® Acrobat® Reader to view the *User's Guide*.

Q. How do I calibrate my MusicPad Pro?

A. Your tablet has been calibrated by the manufacturer and may never need adjusting. However, if it seems that the point to which you place your stylus is a little off when displayed on the screen, you can easily recalibrate the tablet. Select the **Tool** (wrench) icon on the FreeHand

toolbar with your stylus, then select **Calibrate Touch Screen**. Five cross-hair graphics are displayed. Using the stylus (not your finger), touch each of the cross-hairs in the center without dragging your hand or a shirt sleeve across the screen while you are calibrating—doing so affects accurate calibration. If you are not satisfied with the recalibration result or the calibration result prevents you from activating the **Tools** icon, follow the instructions in the following answer.

Q. I recalibrated my MusicPad Pro, but my calibration is still not right. What should I do?

A. You can use a paper clip as a tool. Locate the small hole in the back of the MusicPad Pro. Insert the end of the paper clip into the hole and press down. Your MusicPad's screen will be displayed. This procedure initiates a recalibration of your screen.

Q. How can I conserve the battery charge on my MusicPad Pro Plus?

A. You can adjust the brightness setting on your MusicPad Pro Plus to reserve the battery charge. Select the **Tool** (wrench) icon, then select **Brightness Control**.

Setting brightness to:

- 100% provides approximately 3 1/2 hours of battery charge.
- 50% provides approximately 4 hours of battery charge.
- 25% provides approximately 4 1/2 hours of battery charge.

Q. How do I use FreeHand's online features?

A. You can purchase music, get software downloads, buy accessories, learn how to convert scores into FreeHand format, and participate with other musicians in an online forum.

- **Music:** <http://www.freehandsystems.com/store.html>
- **Software downloads:** <http://www.freehandsystems.com/downloads.html>
- **Great accessories:** <http://www.freehandsystems.com/accessories.html>
- **Information about converting your music scores into FreeHand format:**
<http://www.freehandsystems.com/support.html>
- **Check out the Forum and chat with other musicians and composers using MusicPad Pro at:**
<http://www.freehandsystems.com/support.html>

Q. How do I contact FreeHand Systems, Inc.?

A. Before contacting FreeHand Systems:

- If you are having trouble installing the MusicPad Manager Application, reread the installation instructions above.
- If the MusicPad Manager application is installed, choose the Help Contents selection from the Help menu.

If you need further assistance, see the FAQ and other support information at <http://www.freehandsystems.com/support.html>. You can contact FreeHand Systems Product Support at 1-800-917-1949.

